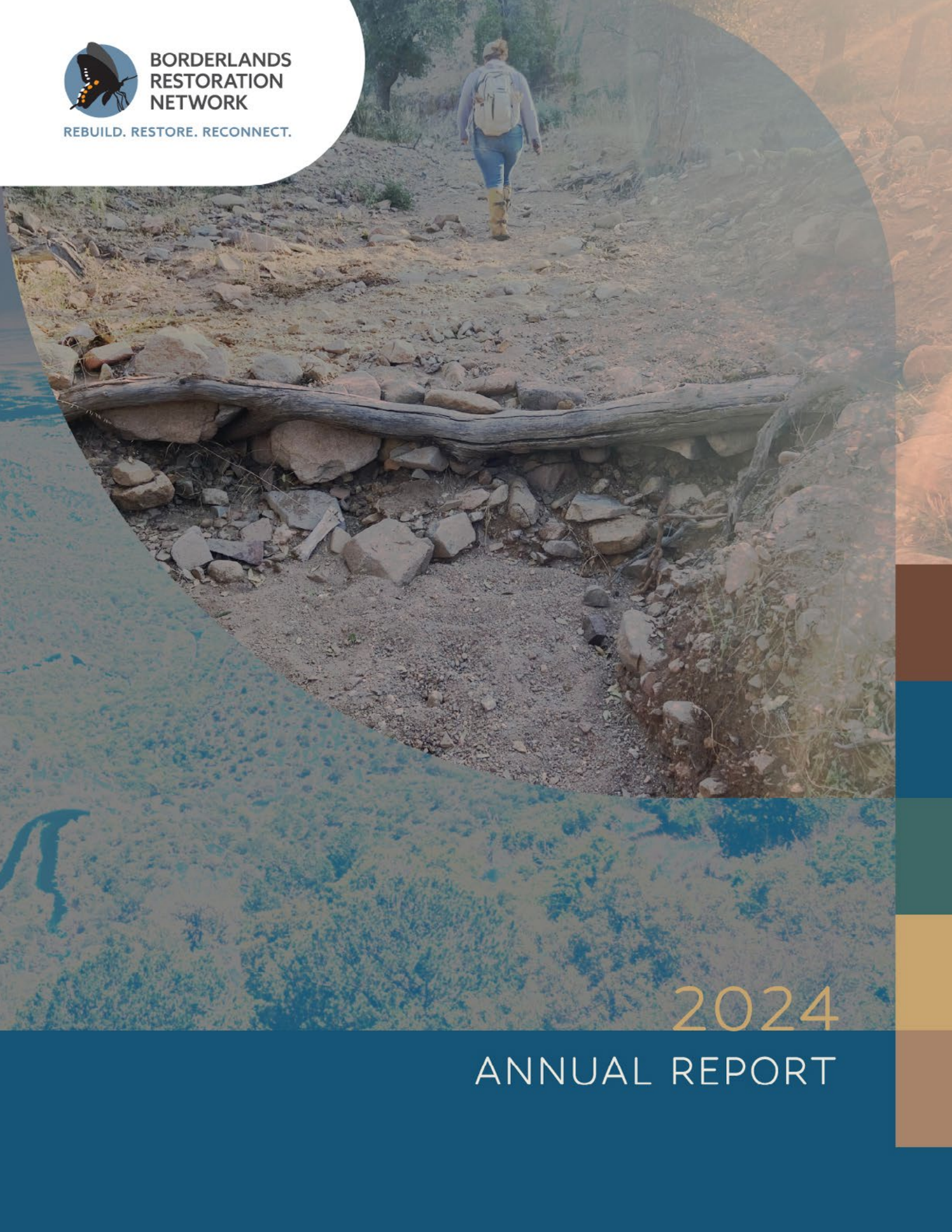




**BORDERLANDS
RESTORATION
NETWORK**

REBUILD. RESTORE. RECONNECT.



2024

ANNUAL REPORT

MESSAGE FROM THE EXECUTIVE DIRECTOR

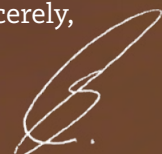
Hello from the Borderlands!

2024 was an awesome year for BRN. We were able to expand our land conservation footprint, grow our staff, expand production of native plants at our newly-acquired farm, purchase new equipment to scale up seeding, install over a thousand erosion control structures, teach dozens of young people to be good stewards of the land they call home, and continue our impact across borders. All this was made possible by our incredible community of supporters, donors, and volunteers.

In this report you will learn how our multidisciplinary conservation and education strategies are making real change in this beautiful and biodiverse region. I'm proud of our organization's impact and thankful for the trust we've built with the diverse communities we serve. Our weather continues to set records, reminding us of the accelerating pace global warming is marching at. As we plan for the future under unprecedented climate and political circumstances, BRN will work even harder to protect our invaluable biodiversity, restore our amazing ecosystems, and reconnect our communities with nature.

We hope you'll stand with us.

Sincerely,



Rodrigo Sierra Corona
Executive Director

WHO WE ARE

Borderlands Restoration Network is a community-based environmental non-profit that works across the ecologically-significant Arizona-Sonora border region, protecting critical ecosystems, restoring habitat for plants and wildlife, and reconnecting our communities to the land through shared learning.



OUR KEY INITIATIVES



CONSERVATION



WATERSHED RESTORATION



NATIVE PLANTS & SEEDS



EDUCATION



IMPACT BEYOND BORDERS



CONSERVATION

The Madrean Archipelago, encompassing more than fifty mountain ranges scattered across Southern Arizona and Sonora, Mexico is recognized as a globally-significant biodiversity hotspot that hosts an estimated 4,000 species of plants, 500 species of vertebrates, and over 600 species of native bees.

This ecologically-invaluable region is at significant risk of losing the critical habitat and wildlife corridors that are key to maintaining biodiversity. Water development, poor land management, extractive industrial practices, and a dramatic increase in human population and its demands on the environment have threatened this ecosystem.

BRN is restoring the connectivity of this region through our Conservation Vision, which builds strategic pathways to conserve this land through acquisitions and partnerships.



THE BORDERLANDS WILDLIFE PRESERVE

The cornerstone of our land conservation initiative is the Borderlands Wildlife Preserve: a 2,200 acre property that sits in the junction where the Sonoita Creek Wildlife Corridor crosses Highway 82, just north of the town of Patagonia. The wildlife corridor has been identified as an important migratory pathway for black bear, mule deer, mountain lions, and endangered jaguars.

BRN and Wildlife Corridors LLC (the Preserve’s current owner) have committed to a Memorandum of Agreement providing for the future donation of the Borderlands Wildlife Preserve to BRN once the organizations together raise a necessary stewardship fund. This will ensure long-term habitat health in this linkage by transferring ownership, management, and restoration responsibilities to BRN.

In 2024, BRN gratefully accepted the donation from Gerald and Cynthia Jenkins of over 70 acres of habitat including riparian



floodplain, expanding the Borderlands Wildlife Preserve and its protection of the Sonoita Creek Wildlife Corridor.

CRITICAL HABITAT PROTECTION

BRN, working closely with Wildlife Corridors LLC, received Forest Service approval of a grant to provide permanent protection for over 640 acres protecting wildlife pathways and important habitat in the greater Sonoita Creek Wildlife Corridor. This grant, which is expected to be funded in 2025, will provide for permanent protection on land owned by multiple landowners. The Forest Service ranked this application as the third most important in the nation among Forest Legacy applications.

CONSERVATION VISION

BRN developed a foundational policy concerning our role in land ownership and began work on a Conservation Vision in which BRN commits to an expanded conservation role in the region. This document will guide our conservation decisions and advances this work in cooperation with public and private agencies and organizations in the U.S. and Mexico, providing resources, science, and practical experience to guide regional conservation efforts.



WATERSHED RESTORATION

Our Watershed Restoration Program aims to build ecological resilience and improve watershed function across the borderlands. Our team addresses the physical scars on the landscape using hand-built structures to mitigate erosion, increase water availability, retain vital topsoil, and promote vegetation growth.

Through our inter-program collaboration, BRN plays a pivotal role in enhancing ecological health by restoring and maintaining vital ecosystem functions essential for sustaining diverse life forms. The integrated efforts of the Watershed Restoration and Native Plant Programs take a holistic approach to restoration that allows native plants and animals to thrive.



WORK AT BWP AND BECC

With funding from the Biophilia Foundation's Riverscape Restoration Initiative, the Watershed Restoration Crew advanced ecological restoration efforts at the Borderlands Wildlife Preserve and the Borderlands Earth Care Center. The crew installed 89 erosion control structures to stabilize soil, improve water infiltration, and support native vegetation growth, enhancing the integrity of the Sonoita Creek Wildlife Corridor. In addition to on-the-ground work, the crew hosted three educational workshops, providing hands-on training that builds community capacity for restoration and climate adaptation. These integrated efforts help restore critical habitat while strengthening the resilience of the borderlands landscape and its communities.



AMERICA THE BEAUTIFUL CHALLENGE

In 2024, we began implementation of a nearly \$1 million collaborative America the Beautiful Challenge award. Over six weeks in the fall, our Watershed Restoration Crew partnered with a National Civilian Conservation Corps cohort, contributing 586 hours of service and installing 162 erosion control structures on the Coronado National Forest north of Patagonia. This work is part of a broader collaborative effort supported by project partners including the University of Arizona, who have made significant progress on bullfrog eradication along the Babocomari River, and AtoZ Environmental Consulting and Tucson Audubon Society, who are leading wildlife monitoring at our restoration sites. Together, we are advancing watershed restoration across southeastern Arizona while building local capacity for long-term stewardship.

EMMERSON RANCH

Thanks to our partners at Arizona Land and Water Trust (ALWT), the Watershed Restoration Crew completed Phase I and launched Phase II of the work on Emerson Ranch, which has a conservation easement through ALWT. In 2024, the crew built 441 erosion control structures within a single drainage flowing into the Babocomari River, a vital tributary of the San Pedro River. This marks our longest completed stretch of drainage, covering over a mile of strategically-placed structures designed to stabilize soils, slow runoff, and improve water infiltration. Phase II efforts are now expanding the installation of erosion control structures



upstream of major headcuts to further protect the watershed and build resilience in the landscape.

RESTORATION SUMMIT

In September 2024, the Watershed Restoration Program hosted a four-day restoration summit in the foothills of the Chiricahua Mountains, in collaboration with Sky Harvest, and the Native Plant and Education Programs. The summit engaged 18 volunteers from across the U.S. and Mexico in hands-on ecological restoration. Together with our crew, participants learned about watershed restoration, built erosion control structures, removed over 80 cubic feet of invasive horehound from beautiful Bear Spring, and planted 300 native plants using the holes from

the horehound removal. The team also produced over 200 pounds of native seed pellets during a workshop led by the Native Plant Program. Throughout the summit, eight guest speakers presented—including scientists, restoration practitioners, and community leaders, providing meaningful learning experiences for both volunteers and staff. This collaborative event was made possible thanks to funding from the National Fish and Wildlife Foundation, and provided a powerful opportunity to share skills, foster cross-program collaboration, and advance restoration in a significant ecological area.



2024 WATERSHED RESTORATION IMPACTS

1,202 erosion control structures installed ranging from one rock dams to trincheras and large zuni bowls

644 tons of potential sediment captured, equivalent to 33 dump trucks

11 workshops that provided hands-on training, engaging a total of 215 participants

Our longest drainage yet: 1 mile of continuous erosion control structures

Developed strategy to connect our network of microsites across public and private lands





NATIVE PLANTS & SEEDS

Our Native Plant Program identifies and responds to the need to promote and protect biodiversity by providing access to locally-adapted plant materials and guidance for effective use through workshops and programming.

The program is anchored by Borderlands Nursery & Seed, which supplies thousands of restoration-quality native plants annually and maintains a comprehensive seed center. The nursery offers a large selection of organically grown native plants and seeds for both home use and large-scale restoration projects. These efforts enhance the pollination process crucial for plant regeneration, contributing to vital ecosystem services in the region.

Working in conjunction with BRN's other programs, these efforts enrich habitats for wildlife, safeguard biodiversity, and support climate adaptation essential for ecosystem resilience.



NEW FARM PURCHASE

In April 2024, BRN completed the purchase of a 60-acre farm to expand our native plant and seed production as well as expand our education and job-training opportunities. For the past decade, we have leased a 10-acre portion of the property in Patagonia from Native Seeds/SEARCH (NSS), which ceased their farm operations in 2017. Owning the farm eliminates our lease insecurity and allows us to expand the production and sale of native seeds and grow our educational programming on the site.

The newly acquired Borderlands Restoration Farm is located near the confluence of Sonoita and Harshaw Creeks, which provides beautiful, well-draining alluvial soils and creates some of the best farmland in Southern Arizona. The fields have likely been farmed for thousands of years, first by native peoples, including the Tohono O'odham, then for alfalfa production in the 1950s, heirloom domesticated native crop seed in the early 2000s, and now for wild native seed used in ecological restoration.

This purchase would not be possible without the generous support of Valer Clark, Loretta and Chris Stadler, and the Carroll Petrie Foundation, as well as collaboration with The Nature Conservancy, which holds

the conservation easement over the land. We would also like to thank everyone who has contributed to the visioning and efforts of this farm throughout the last decade, including the Patagonia community, our volunteers, customers, and restoration partners over the years. We have spent years negotiating this acquisition with these fantastic, like-minded partners and organizations and are excited for what's to come.





HYDROSEEDING

Borderlands Nursery & Seed is now offering hydroseeding services to Southern Arizona. Hydroseeding is a method of rapid seed

application that helps to improve the chances of germination and even cover. In April 2024, BRN acquired hydroseeding equipment from Jim Kowee of AZ Revegetation, who has shared his expertise with BRN staff as we develop this new offering. With our ecological and botanical knowledge, BRN hopes to establish ourselves as the go-to source for revegetation using appropriate native seed mixes curated by our staff.

Hydroseeding is less expensive than planting sod or container plants for larger areas, and it is more efficient and effective than broadcasting naked seeds which are likely to be gobbled up by critters. Plus, hydroseeding with native species benefits the ecosystem by helping to control erosion and providing habitat for wildlife.

SEEDS OF SUCCESS

Fall in southeastern Arizona's grasslands is a critical window for harvesting seeds, especially those of our native grass species which almost all flower with the monsoon rains and disperse their seeds by the end of November. This season is marked by a kind of "mad dash" to capture species diversity in seed collections before all the seeds are gone and the plants go dormant for the winter.

In fall of 2024 BRN participated in the Bureau of Land Management's Seeds of Success (SOS) program to collect wildland native seeds for research, conservation, and post-fire restoration. The SOS program utilizes a specific collection and data tracking protocol that is used to capture the genetic diversity of native plant species all over the country. Through the SOS program, crews collect seed which is then sent to national seed labs for cleaning and testing before being sent to land managers for immediate application in restoration



projects, to farms for mass production, or storage facilities for future use.

BRN's Native Plant Program hosted a 7-person seed collection crew through an agreement with the National Park Service and targeted BLM and NPS lands in southeastern Arizona, with a specific focus on the Madrean Archipelago/ Apache Highlands ecoregion. The crew spent over two months collecting seeds in some of the region's most stunning landscapes including the San Pedro Riparian National Conservation Area, Coronado National Memorial, Las Cienegas National Conservation Area, Fort Bowie National Historic Site, and Chiricahua National Monument.

2024 NATIVE PLANT PROGRAM IMPACTS

50,000 native plants propagated

84 distinct seed collections of 70 species

345 lbs of bulk seed harvested
186 lbs from farmed production
159 lbs harvested from wild populations
to support restoration projects

7,150 lbs of seed pellets containing 300 lbs
of seed were made and applied to restoration
projects at 5 restoration sites

1,000 agaves planted across the borderlands
for nectar feeding bats in partnership with
Bat Conservation International

5,750 agaves propagated for future plantings

129,795 square feet hydroseeded with
native seed

6 workshops, 17 tours, and 26 native plant
outreach events and presentations

4 native plant internships

Hosted three rounds of Americorps NCCC
with 28 individuals total

116 volunteers with 3,568 volunteer hours



EDUCATION

BRN believes that the environment’s health is intrinsically linked to the wellbeing of its people, which is why our Education Program seeks to share knowledge and inspire conservation practices in the borderlands through learning opportunities and skills training with youth and adults.

Our place-based educational programs engage our communities in learning about the ecosystem they are a part of, and energizing them to take an active role in caring and advocating for the environment. BRN’s education programs provide our communities with technical skills training and job opportunities in conservation and restoration fields. These opportunities help shape participants’ views of the environment they live in and the role they each play as stewards in their communities.



BORDERLANDS EARTH CARE CENTER

BRN has been busy developing the Borderlands Earth Care Center (BECC) into our new sustainability-focused education hub in Patagonia. After purchasing the 19-acre property a few years ago, BRN has been cleaning up the property, doing infrastructure repairs, and site planning.



This center will be open to the local Patagonia community as well as visiting groups from the borderlands region and beyond. BECC is an integral part of BRN’s mission to reconnect communities to the land through shared learning and experiences. The education hub will demonstrate our practical restoration-focused curriculum in an accessible and culturally-relevant context.



INTERNSHIPS

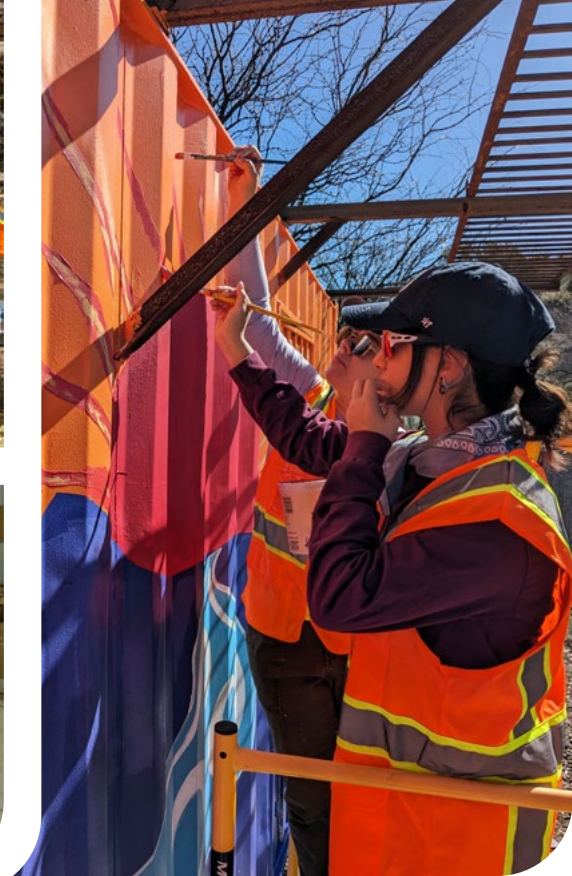
The Native Plant Program hosted three interns from the Resilience Internships and Student Experience (RISE) program. This program connects the University of Arizona students to internship opportunities that cross academic boundaries and international borders. The RISE Program provides funding to UA students for paid internship opportunities to grow their interpersonal skills.



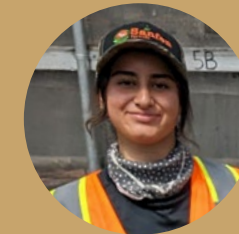
VISITING GROUPS

BRN welcomed 100+ students from various locations, including gap year programs and universities, providing unique hands-on learning opportunities to explore the borderlands, ecological restoration, native plants, permaculture, and other subjects.

- AmeriCorps National Civilian Community Corps
- Boston College
- Bentley University
- Prescott College
- Simmons University
- Whitman College - Semester in the West Program
- University of Arizona
- University of San Diego Kroc School of Peace & Justice
- University of Wisconsin Eau Claire



2024 BECY INTERN TESTIMONIALS



"The BECY program is a great program to gain leadership skills and gain knowledge on the three pillars of restoration: community, watershed, and ecological restoration."

- Vianca



"BECY was a very touching experience. I wanted to get in just to get more restoration experience out in the field, but I wasn't expecting how informative, touching and inspiring it would be to work with so many great professionals. BECY made me consider how important community is in the context of ecological restoration and how I can be someone to help and participate more in my own community towards a better ecosystem."

- Fernanda



"BECY has taught me many new concepts and skills in restoration that will be valuable to me for the rest of my life."

- William

BORDERLANDS EARTH CARE YOUTH (BECY)

Borderlands Earth Care Youth (BECY) inspires and trains the next generation of environmental stewards by hiring culturally diverse youth living in the U.S.-Mexico borderlands to restore the transnational watersheds they call home. The 2024 BECY Program employed a total of 7 interns from Patagonia, Rio Rico, Nogales, Arizona, and Nogales, Sonora.

During the seven-week program in various locations along the borderlands, the team followed a place-based curriculum focused on practical erosion control techniques and applied preservation of biological corridors and public spaces.

As part of the program's arts ecology series, the cohort collaborated with the Patagonia Creative Arts Center to design and implement a set of murals at BECC to inspire a sense of place and start developing the identity of this recently acquired sustainability education hub. Throughout

the program, participants worked on a creative reflection project to delve deeper into a topic of personal interest that they later shared with their peers and members of the community during their graduation ceremony.

In 2024, the BECY program emphasized conservation of water resources. With the help of the Friends of Sonoita Creek, the team completed water testing at Patagonia Lake and wet-dry mapping of Sonoita and Harshaw creeks. At Tumacácori National Historical Park, BECY removed trash and debris from a section of the Santa Cruz River, collected GPS data for mapping of the park, and removed barbed wire fencing in historic agricultural fields. The youth crew spent several days at the Patagonia-Sonoita Creek Preserve working on invasive species removal, installing pollinator gardens at the Visitor Center, and setting up irrigation for sacaton grass plots.



IMPACT BEYOND BORDERS

Since our founding, BRN has been committed to supporting socio-ecological restorative projects beyond our organization, especially small, newly-organized initiatives that need institutional assistance to operate and expand their impact.

Over the years, we have supported efforts in Sonora, Arizona, and Tanzania, including urban ecological restoration, landscape conservation, and human health initiatives. We are honored to have the opportunity to amplify these growing organizations that are aligned with our mission, and help them make positive changes.



A pollinator garden guide developed with our partners in Mexico.



NUESTRA VIDA VERDE

Nuestra Vida Verde (NVV) is an organization based in Hermosillo, Sonora, Mexico that supports vulnerable populations and people experiencing homelessness by providing sustainability education and job training. They offer workshops and volunteer opportunities related to urban restoration design, green infrastructure, irrigation, rainwater harvesting, composting and composting toilets, native plants and pollinators, food forests, microclimates, and medicinal gardens.

In 2024, NVV worked at the Casa Galilea shelter to create a Garden for Sustainability (*Huerto para la Sostenibilidad*), which provides permaculture design workshops and skills training for visitors and the public. NVV started with a “blank slate” and broke ground installing the first garden beds, composting area, and passive rainwater collection earthworks. Throughout the year, the project advanced by engaging stakeholders, optimizing the use of space with green infrastructure systems, and installing graywater capture and filtration systems. The ongoing efforts of NVV showcase a model for occupational therapy that leads to successful rehabilitation.



The Garden for Sustainability provides hope and purpose. It allows space for community building across social boundaries and connection with the natural environment in a highly-urbanized context.

CAMINANTES DEL DESIERTO

Caminantes del Desierto (CDD) is a grassroots non-profit based in Hermosillo, Sonora, Mexico that is made up entirely of volunteers. Their mission is to influence and inspire the renaturalization and conservation of the Sonoran Desert by encouraging citizen participation in public policy, project management, and environmental education.

The organization played a vital role in securing status for Cerro Johnson, the first

Protected Natural Area in the municipality of Hermosillo. They actively encourage the public to claim this space as a central park, and significant efforts have been made to remove trash and debris, eliminate buffelgrass and other invasive species, as well as replant native endemic species to restore biodiversity. Another initiative is the development of the memorial forest at Panteón Yáñez, a local cemetery. Additionally, the *Camellón Botánico*

streetscape project promotes making all spaces, including curbs and highway medians, into passive rainwater harvesting systems and native plant gardens.

In 2024, CDD hosted several skillshare events on a variety of themes, such as reading the landscape, introductory botany, native plant propagation and planting, pruning, seed pelletization, rainwater harvesting techniques, and more. Within the year, more than 800 plants were put into the ground and 376 people were involved in hands-on restoration projects in different sites including the University of Sonora, Panteón Yáñez, and several public parks.



SALUD COMCAAC

Salud Comcaac, led by BRN Senior Fellow Laura Monti, fosters community and ecological health in partnership with the Comcaac Nation of Sonora, Mexico. The Seris Indians, also known as the Comcaac, are an endangered people living in coastal desert and mountain habitat along the coast of the Gulf of California. Our partnership with the Comcaac community is rooted in the understanding that the desert and sea environment and the indigenous communities that dwell within them are interdependent.



Mangrove Restoration

The Comcaac Blue Carbon Team reached our 3 year goal of extending and enhancing 30 hectares of mangrove forests in 6 estuaries located in the Infiernillo Channel, protecting 480 hectares of mangroves.

Seagrass Conservation

The team is working to protect 7,000 hectares of *Zostera marina* – the largest seagrass beds in the Gulf of California – through research and education. The Comcaac Blue Carbon team mastered marine ecological data collection techniques with Dr. Zulia Sánchez and students from the Instituto Tecnológico de Sonora. This valuable information documents the conditions in which extensive mangroves and eelgrass beds have thrived, to be used as reference points as climate conditions change over time. Measures include water quality parameters, temperature, and light needed for seagrass growth and GIS mapping to determine the distribution and shape of the seagrass beds.

Sea Turtle Conservation

Sea turtles come to the Infiernillo Channel to feed on the rich seagrass and to nest on the isolated beaches. To protect these nests from predators (primarily coyotes), the Comcaac Sea Turtle Conservation Group engages in beach monitoring, nest protection and nursery egg incubation. Participants recovered eggs from 26 nests and incubated 2,547 eggs. Historic high temperature extremes and lack of rain throughout the region contributed to an unusually low number of nests and incubation success in the 2024 season.

Community Health

Revitalizing traditional foods and medicinal plants for health through cultural and ecological restoration is a vital part of the mission. The Comcaac community is the only known community in the world that has preserved the knowledge and use of eelgrass, a highly nutritious seagrass grain. Twenty children and youth gathered and dried the floating eelgrass (*Zostera marina var atam*) that washes up to the shore. After winnowing the dried grass, the seeds are ground into flour. Comcaac teachers demonstrated how to prepare porridge, drinks, tortillas, and patties. The children savored these foods with honey while



learning about the cultural heritage and conservation of this unique local variety of seagrass.

Mesquite Harvest 2024: Improving Livelihoods and Nutrition

To celebrate the 20th anniversary of the Comcaac Mesquite Collective we invested in new equipment to process the mesquite pods into flour: an electric mill, a toaster and mechanical sifter. This will increase efficiency, improve working conditions, and reduce energy costs. The project benefitted twenty families who earn much-needed seasonal income when fishing is off.



VOLUNTEERS



4,639 VOLUNTEER HOURS

We express immense gratitude for the numerous hours of service our committed volunteers have contributed to advance the mission of BRN. Their altruism and dedication have had a significant impact in the borderlands.

Your enthusiasm and commitment are truly motivating to us. Thank you, volunteers!

VOLUNTEER SPOTLIGHT



From left to right: **MaryLou Duffy, Rick Dillon, and Barb Saulsbury** who volunteer on Mondays at the Seed Lab and are in their 3rd year working with us!

Thank you!



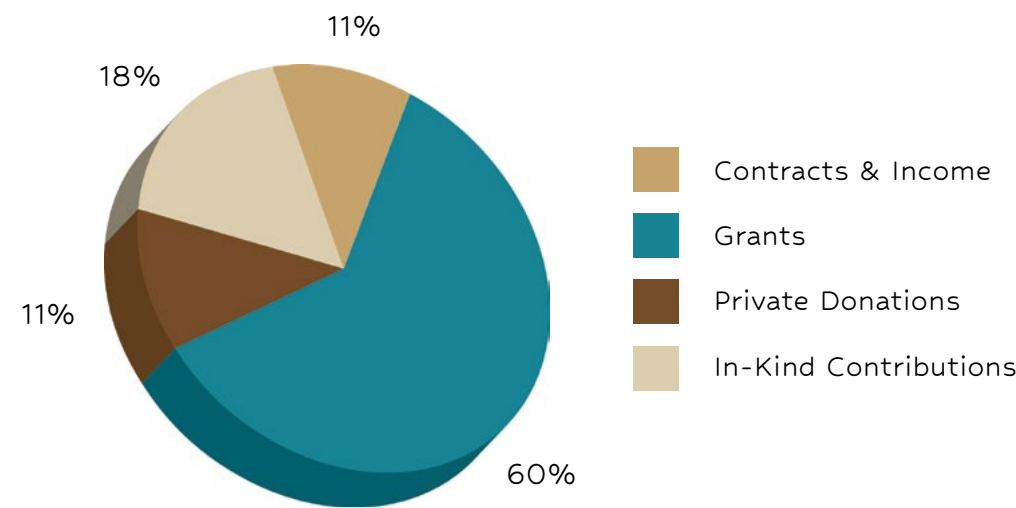
BRN STAFF
& BOARD

Scan the code
to meet the staff
& board of BRN

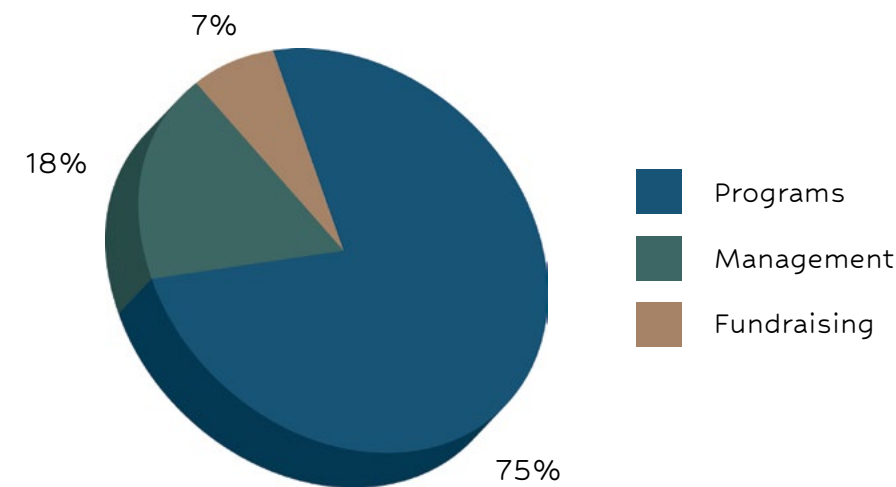


FINANCES

2024 Total Income: \$3,210,123



2024 Total Expense: \$2,106,002



*The information presented above is drawn from Borderlands Restoration Network's 2024 audited financial statements from BeachFleischman PC.

WITH THANKS



\$100K+

Terry Root

\$20K+

Marcey Olajos & Ron Lee
Wendy & Hank Paulson
Tom Sisk
Susan Wallace
David Welborn & Ann Hunter-Welborn

\$10K+

Jack May*
Ruth Musgrave

\$1,000+

Anonymous (1)
Robert & Penny Cabot
Yunghi Choi & Terence LaNoue
Lynn Davison & Judy Clegg
Joanne Dornan
Joel Eckhaus & Donna Doughten
Barbara Ellis
Valerie Gordon
Ann Gosline & Jerry Rodman
Ann Helstad
William Hiscox
John & Kathy Hughes*
John & Mary James
Chuck & Sarah Klingenstein*
Melanie Morrison & Kerry Schwartz
Valerie Neale*
Jay Nelson & Rachel Stewart
Stephanie Nichols-Young
Oliver Ryder
Julie Sarkissian & Ron Stanke
Mikol Sesker
Jennifer Thies

\$500 - \$999

Dennis Burges
Valerie & Kenneth Claverie
Dino DeConcini & Beth Murfee DeConcini

Jim & Kathy Emme
Pamela Freeman
Steven Kuhn & Mary Stiner
Jill Marsden & Ros Bond
Kathleen McDaniel
Natalie Meyer
Alan & Shelley Newman
Dorothy A Rhodes*
Jim & Lou Schatz
Lindsey Shaw*
Dawn Smart
Bruce Tannehill & Gail Cleveland
Nick Waser & Mary Price

\$1 - \$499

Anonymous (17)
Elaine Andres*
Tracey Applebee
Alliaya Attar
Tamara & Joseph Banar
Patrick Barabe
LoriAnne Barnett
Jon Bauer
Sue Baz & Steve Wenzel*
Carolyn Bentley
Mark Berg
Alex Binford-Walsh*
Amy Bird & Doug Bland
Jane & Carl Bock
Heather Borman
Kate & Dave Borneman
Brad Boschetto
Cynthia Bower
Donald Bowles
Bob Brandt & Anne Townsend*
Debbie Brewer*
Barry Briggs
Michael & Christie Brown
Jeff & Laura Buchanan
Frances & Richard Bucien
Joelle Buffa
Dawn & Chet Busse*
Robert Butler
Richard Cadwell
Bryan Campbell
Francisco Cantu
Yosune Casana*
Helen Chester
Josette Claverie
Gary Cole & Jean Foley
Matthew Cole
Richard & Diane Collins
Anna Consie*
Oscar Cortes

Seth Cothrun & Harper Hall
Rebecca Craft & Joe Vaughn
Tim & Sarah Crews
Roberta de Araujo & Ronald Kreisman
David Dewenter
Abby Dockter*
David Dodge
Raymond Dolan
Fran Dostillio
Mary Lou Duffy
Donna Edmonds*
Kirk Emerson & Ron Wright
Connie Engard
Laurie Eppard
Marlys Erickson & Chris Hurley
Rick & Jan Espe
Sarah Federman
Regan Fisher*
Susan Fleishman
Will Flynt
Peter Friederici
MaryAnne Fulton*
Elizabeth Garber & Roy Pearson
Patricia A Gilman & Paul E Minnis
Tyr D Ferguson
Jeanie Gosline & Jeff Walloch
Mary & Charles Graf
Darin & Ali Grassman
Robert Grey
Loma Griffith*
Katherine Griffiths
Zachary Harris
Janet & Paul Hart*
Constance Heaton*
Jan Herron & Gama Leyva
Dominika Heusinkveld
Tom Hildebrandt*
Julie Holding & Meg Gilbert
Arthur Howe
Ken Hunt
Kendall Hurst
Colleen Iuliucci
Alex & Jill Johnson
Laura & Don Julian
Peg Kazda
Mary Keane & Jim McCorry
Jay & Barbara Kittle
Kris & Amy Klein
Rodd & Chi Lancaster
Chad Lash
Michelle Latimer
Celia Lewis & Michael Anderson
Maria E Lino
Sidney Lissner
Jeff & Eleanor Lockwood

*These donors are members of the Restoration Partners Monthly Giving Society.

Krisanne LoGalbo*
Claudia Luevano & Douglas W Trinder
Marilyn & Alvino Majalca
Emily Mann, Solaz Designs Metal Art
Steven Marlatt
Loren Mason-Gere
Rebecka & Michael Meyers
Fred Miller
Tamara Miller
Bob & Elise Misorowski
Gary Nabhan & Laurie Monti
Michelle Moyer*
Brian Mulford*
Kate & Murphy Musick
Kathy Neff*
Josh Ness
April Newman
Laura Novoa
Paul Pegorsch*
Jose Manuel Perez Cantu
Sonia & Adam Perillo
Joy Perry
Mark Perry
Katya Peterson & Pierre Landau
Michael Popiwny & Paul Koopman
David & Sondra Porter*
Sandra Powell & Joe Coniff
Joe & Lucy Pulliam
Thomas Pulliam
Vicki Rapp Gabrielson
Audrey & Drake Ridge
Philip Rosenberg & Quinta Peterson-Rosenberg
Pamela & David Rossetter
Brit Rosso
Michelle Rushton*
Charlene Saltz & Chris Gardner*
Gregg Gorton & Pamela Sankar*
Christina Schreck
Bryan & Sherry Seaman
Carolyn Shafer & Robert Gay
Kai Shane*
Dyanne Sheldon & Jean Singer
Thomas & Linda Shore*
Gretta Siegel
Larry Spears
Mary & James Spicer
Sarah Stratton*
James Stratton
Mark Stromberg
Charles & Ileana Swanson
Alice Sweedo
Joan Thompson
Gayle & Jack Thompson
Earl & Denise Thompson

Mary Tolena*
Margaret Truders*
David Turcotte
Mark & Denise VanArtsdale
Laura Villegas
Joe Watkins & Barbara Casimir*
John Welch & Jami Macarty
Catherine Williams
Kelsey Wolf-Donnay
Susan Zucker

IN-KIND DONORS
Gerald & Cynthia Jenkins
Terry Root

CORPORATE DONORS
AZ Wilderness Brewing Company
Consolidated Resources, LLC
Fry's Food Stores
Heliotrope
High Spirits Flutes
KRO Events
Microsoft
Patagonia Trading Post, LLC
Paypal Giving Fund
Ruta del Jefe
State of Arizona State Employees Charitable Campaign
The Egyptian Motor Hotel
UnitedHealth Group

GRANTORS
11th Hour Racing
Amazon Conservation Team
Arizona Community Foundation
Arizona Department of Agriculture
Arizona Department of Forestry and Fire Management
Arthur J. and Kathryn Koehler Howe Charitable Giving Fund at The Chicago Community Foundation
Berkner Family Fund
Biophilia Foundation
Bio-R USA
Bobolink Foundation
Bureau of Land Management

Burton Family Foundation
Centers for Disease Control and Prevention
Community Foundation for Southern Arizona
Flinn Foundation
Frances Seebe Trust
Hunter Family Advised Fund at Rancho Santa Fe Foundation
Kalliopeia Foundation
National Fish and Wildlife Foundation
National Park Service
SB Foundation
Southern Arizona Quail Forever
Tannehill/Cleveland Designated Fund at the Whitefish Community Foundation
The Cliffrose Fund
The Lil and Dave Fund held at the Community Foundation for Southern Arizona
The San Diego Foundation
The Schmidt Family Foundation
The Tides Foundation
The Whitefish Community Foundation
The Woodtiger Fund
United States Fish and Wildlife Service
United States Forest Service
University of Arizona/Department of English
Virga Foundation
Virginia Wellington Cabot Foundation
Walton Family Foundation

PROJECT PARTNERS
47Ranch
Agave Heritage Festival
Americorps NCCC
Appleton-Whittell Research Ranch
Arizona Association for Environmental Education
Arizona Department of Environmental Quality
Arizona Department of Transportation
Arizona Department of Water Resources
Arizona Game and Fish Department

Arizona Land and Water Trust
Arizona Revegetation and Monitoring Co.
AtoZ Environmental Consulting
AZ Trail Association
Babacomari Ranch
Bat Conservation International
Bentley University
Bureau of Land Management
Canelo Project
Carroll Petrie Foundation
Casa Galilea (Nuestra Vida Verde)
CDC Foundation
Centro de Investigación en Alimentación y Desarrollo
Chandler Nature Center
Cochise County Master Naturalist Program
Colectivo Caminantes del Desierto
Colectivo Sonora Silvestre
Comcaac Nation Authorities
Comcaac High School Punta Chueca / Desemboque
Coronado National Forest
Coronado National Memorial
Cuenca Los Ojos
Desert Botanical Garden
Diamond Mountain Retreat Center
Dirtbags
Earlham College
Ecotone Biodiversity
El Colegio de Sonora
Emmerson Ranch
Exo Roast Co.
Flowers & Bullets
Fort Bowie National Historic Site
Fort Huachuca Sentinel Landscape Foundation for America's Public Lands
Friends of Sonoita Creek
Gila Watershed Partnership
Institute for Applied Ecology
Instituto Tecnológico de Sonora - Ciudad Obregón
Instituto Tecnológico del Valle del Yaqui
Las Cienegas National Conservation Area
Lazy RR
Mission Garden
National Fish and Wildlife Foundation
National Outdoor Leadership School
Native Seeds/SEARCH
Natural Resources Conservation Service

Northern Arizona University
Northern Jaguar Project
Palmeri Distillery
Patagonia Area Resource Alliance
Patagonia Butterfly Garden
Patagonia Creative Arts Association & Tin Shed Theater
Patagonia Lake State Park (Arizona State Parks)
Patagonia-Sonoita Creek Preserve (TNC)
Patagonia Union High School & Middle School
Patagonia Volunteer Fire & Rescue
Petrified Forest National Park
Plan Vivo Foundation
Prescott College Kino Bay Center for Cultural and Ecological Studies
Pyeatt Ranch
San Pedro Riparian National Conservation Area
San Xavier Natural Resources
Santa Cruz County
Sierra Club
Sky Harvest
Sky Island Alliance
Southwest Seed Partnership
Sweetwater Center
T4 Ranch
The Nature Conservancy
The Southwest Center
Tonizhoniani
Tonto National Forest
Town of Patagonia
Tucson Audubon Society
Tucson Botanical Gardens
Tumacácori National Historical Park (National Park Service)
United States Department of Agriculture
United States Fish & Wildlife Service
United States Geological Survey
Universidad de Sonora/DICTUS
Universidad de Sonora/Plataforma Energía Renovable
University of Arizona
University of Arizona/Mel & Enid Zuckerman College of Public Health
University of Arizona/Santa Cruz County Cooperative Extension
Watershed Management Group
Whitman College
Wildlands Network
Wildlife Corridors, LLC

BORDERLANDS RESTORATION NETWORK
PO Box 121, Patagonia, AZ 85624
(520) 216-4148
info@borderlandsrestoration.org



Scan the code to donate!

Learn more about our current giving opportunities including our leadership giving society the Founders Circle, how to become a monthly donor, or make a gift today to help support the ongoing work and mission of BRN.



@borderlandsrestorationnetwork
@borderlandsrestoration
@borderlandsplants
@borderlandswildlifepreserve

www.borderlandsrestoration.org